





Sage International, Ltd. was established in 1973 as a trading company. In 1979 Sage began manufacturing products to serve the law enforcement and special operations military markets.

Since inception, we continue to meet the needs of our customers by expanding our range of defensive and military products. Eventually this grew to the point where it became necessary to form a separate company specifically for the production of less-lethal munitions, known as Sage Control Ordnance, Inc.

Today Sage International, Ltd. produces multiple variants of M1A/M14 Enhanced Battle Rifle Chassis Systems, Shotgun System Enhancement products, Security products and other specialized defensive military items. Recently Sage International, Ltd. started crafting chassis systems for a variety of other rifles. These now include the M1 Garand, Mini-14/30/AC-556/6.8 & M1 Carbine.

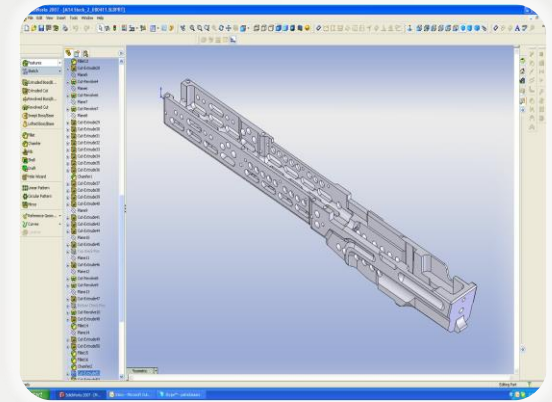
Sage International, Ltd. serves the US Armed Forces, Federal, State, and local law enforcement agencies in the United States, as well as a growing number of foreign agencies/militaries and continues to improve and expand our product range to meet the changing demands of our customers.

***THE FIRST CHOICE OF
WARFIGHTERS***



The Sage R&D Team is responsible for high performance design, simulation, and testing. To enhance the final product our R&D department starts by utilizing concepts and designs that are user driven and based on "in the field" or "in-theater" input. Modern CAD/CAM machining techniques and precision CNC machinery help to quickly and accurately produce prototypes and working models.

Testing regimens are then used to stress function in the most hostile environments, which further advances developments into final designs of ergonomically sound and reliable product solutions. From initial design proposal to final production, our Research & Development department is constantly looking to innovate and adapt to meet the needs of an evolving marketplace.



As a leading manufacturer of military, law enforcement and special projects equipment, Sage takes quality and reliability very seriously. The Sage Production and Quality Control team is committed to excellence whilst crafting the very best products for you.

Throughout our manufacturing process strict guidelines are followed to maintain optimum quality on the products we manufacture. Sage utilizes modern CAD/CAM machining techniques and precision CNC machinery. This, together with our dedicated and skilled team, ensures regular reliable outcomes.

Sage quality control department maintains measuring instruments that are regularly calibrated and checked. Every product is visually inspected to match strict specifications prior to delivery.

Production information is archived to maintain total documentation throughout the manufacturing process. This ensures reliable follow-up with regard to any possible discrepancy. Additionally Sage is DOD 4145.26M and MIL-STD 1916 compliant.





ENHANCED BATTLE RIFLE

Chassis Stock System

In 1999 the United States Navy SEALs/Naval Surface Warfare, Crane Division, approached Sage International, Ltd. for assistance in modernizing the M14 rifle. The 7.62x51mm NATO cartridge coupled with the M14's reliable and robust design made the rifle superbly suited for long range target engagement.

As part of the Arctic rifle program the M14 was not suited in its existing wood and synthetic stocked configuration to be easily deployed in confined spaces and harsh environments. This prompted the SEALs to begin searching for a more compact M14 for arctic warfare.

After field evaluations the SEALs reported they liked the Sage aluminum chassis mod the best. Through a combined effort of Crane and Sage, the M14 Enhanced Battle Rifle was born.

To date Sage International, Ltd. has supplied over 15,000 EBR Chassis Stock Systems to the United States Armed Forces and commercial markets.



M14 EBR-RI
M14 EBR-RI NM



MK14 MOD-0
MK14 MOD-1
MK14 MOD-2



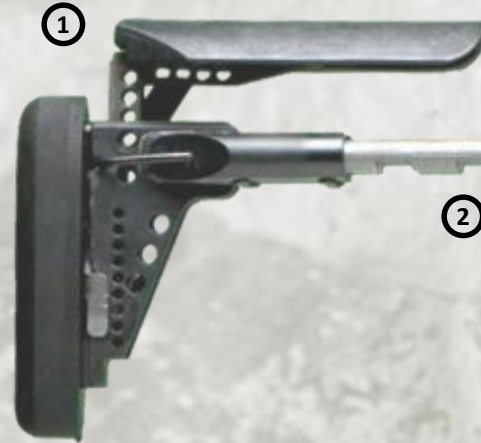
MK14
MOD-0



M14 T EBR



M39 EMR



M14ALCS/CV



M14ALCS/CVFS



M14ALCS/CV16FS



M14ALCS/PMRI



EBR CHASSIS MODEL:	M14ALCS
OVERALL LENGTH (COLLAPSED):	27.5"
OVERALL LENGTH (EXTENDED):	33.5"
WEIGHT:	5.0 LBS
LOP (COLLAPSED):	9"
LOP (EXTENDED):	15"
GRIP:	ERGO® GRIP
FINISH:	MIL-SPEC ANODIZE
SIGHT BASE MODEL:	M14DCSB
FORE-GRIP MODEL:	M14VFG

- 1) Adjustable polymer cheek rest provides 2" of vertical adjustment
- 2) Proprietary telescoping butt stock allows 6 length of pull positions
- 3) Ambidextrous steel sling mounts
- 4) Textured ERGO® Grip with finger groves & storage compartment
- 5) M14DCSB Detachable Cantilevered Sight Base for mounting optics

- 6) Quick-Detachable Sage M14VFG Vertical Fore-Grip
- 7) Formed KYDEX® hand guard minimizes heat transfer
- 8) Patented steel operating-rod guide block provides rigidity & accuracy
- 9) Quad-Rail Picatinny system for mounting additional accessories
- 10) Multi-tool used for proper disassembly & maintenance



M1GALCS
MOD-O Telescoping Butt Stock

Sage recently expanded upon the success of the theater-proven M14 Enhanced Battle Rifle with the release of additional chassis stock systems for the M1 Garand, Ruger® Mini-14®/Mini-30®/AC-556 and M1 Carbine rifles.

Unlike other “tactical” stocks, Sage chassis stock systems are not built just for looks. Our products are designed to transform your ordinary firearm into a more reliable and accurate battle rifle.

Our chassis stock systems are CNC machined in the United States from hardened aluminum and finished with Mil-Spec anodizing.

All Sage chassis stocks systems are drop in conversions with no permanent rifle modifications or additional bedding necessary.

Each system also features a quad-rail system to allow unlimited mounting of optics and accessories.

Whether you prefer a DMR platform or Close Quarter Battle Rifle, Sage manufactures a modular chassis stock system for you to get the job done.



M1GALCS/CV
Standard Mil-Spec Buffer Tube



M1GALCS/CV16FS
Classic M16 Fixed Synthetic Butt Stock



M1GALCS/CVFS
Compliant Fixed Butt Stock – MAGPUL SGA™



M1GALCS/PMRI
Precision Marksman – MAGPUL PRS2™

MINIALCS/CV
Standard Mil-Spec
Buffer Tube



MINIALCS/CV16FS
Classic M16 Fixed
Synthetic Butt Stock



MINIALCS/CVFS
Compliant Fixed Butt Stock
MAGPUL SGA™





M1CALCS/CV

Standard Mil-Spec Buffer Tube
(Rifle, Sights & Sliding Stock Not Included)

As a standard issue firearm for the US Military during World War II, the Korean War and the Vietnam War, the M1 Carbine gained high praise for its small size, light weight and firepower.

Today the M1 Carbine is more popular than ever thanks to modern powerful ammunition. Sage is taking the M1 Carbine popularity one step further with the introduction of the ETC Enhanced Tactical Carbine chassis stock system.

Our new ETC chassis is designed to turn your standard M1 Carbine into a modern fighting instrument.

The Sage ETC chassis is built along the lines of our other successful chassis stock systems. It is a true drop in conversion and features our standard Picatinny quad rail system for mounting optics and accessories.

Turn your M1 Carbine into a real rifle with the Sage ETC chassis stock system.



- 1) Accepts aftermarket Picatinny flip-up sights & optics**
- 2) Quad-rail allows operators to add bipods, weapon lights & other accessories**
- 3) Removable AR-15 style pistol grip**
- 4) Buffer tube accepts Mil-Spec sliding stocks, folding knuckle adapters, etc**

**SKSCS/CV**

Standard Mil-Spec Buffer Tube
(Rifle, Rail Kit & Sliding Stock Not Included)



- 1) Vented aluminum hand guard dissipates heat during firing
- 2) Tri-rail kit allows operators to add bipods, weapon lights & other accessories
- 3) Accepts factory fixed magazine & aftermarket removable SKS magazines
- 4) Removable AR-15 style, textured ERGO® Grip with finger groves & storage compartment
- 5) Buffer tube accepts Mil-Spec sliding stocks, folding knuckle adapters, etc



ENHANCED BATTLE RIFLE

Chassis Stock System

Sage has established a reputation among sporting, military, and law enforcement customers as a manufacturer of premium-grade tactical chassis stock systems. Every accessory we manufacture is held to that same standard.

Our EBR and M16 accessories are known to be accurate, easy to install or detach, and designed to fit Picatinny rails that may be worn or out of specification.

Whether you are trying to replicate a Rock Island MOD-0 or make your precision rifle more stable with the addition of a monopod or adjustable butt extension kit, Sage has the accessories to help you get the job done.



M14FACC
FULL AUTO
CUT-OUT COVER



M14ERGO
REPLACEMENT
PISTOL GRIP



M14SCSB
STRIPPER CLIP
SIGHT BASE



PMRI-MR | PMRI-FR
MONOPOD & SLING RAIL
FITS PRS2 STOCKS



M14DCSB
DETACHABLE CANTILEVERED
SIGHT BASE



M14BEK
M14ALCS BUTT
EXTENSION KIT



M14APRS
ADAPTER PICATINNY
RAIL SECTION



M14SCSB/EL
STRIPPER CLIP SIGHT BASE
EXTENDED LENGTH



MHG16
STEEL HAND GUARD
FITS SMG



FRSM16G
STEEL LIGHT MOUNT
FITS M16A2, SMG & 9MM



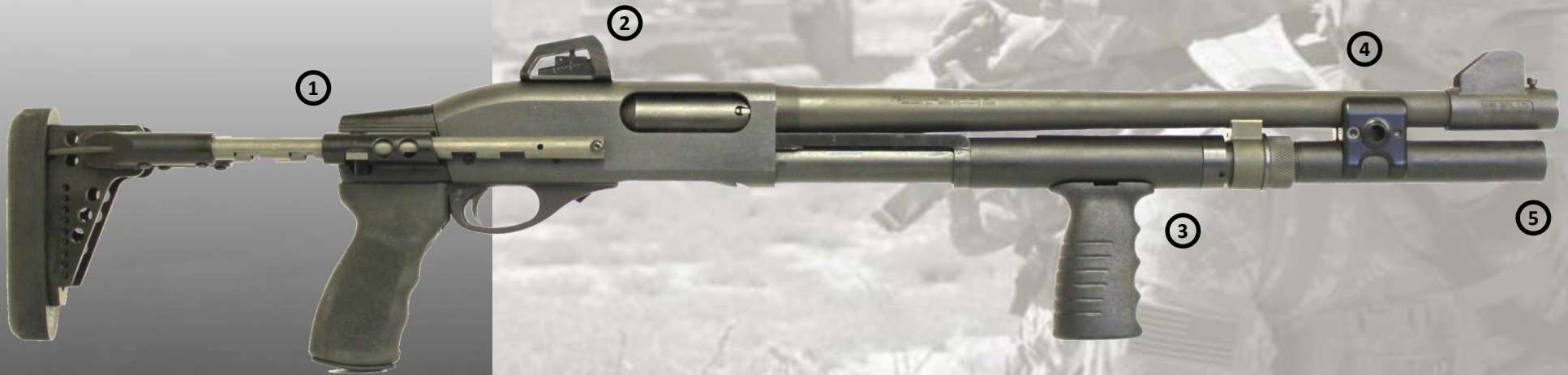
FRSM16S
STEEL LIGHT MOUNT
FITS M16 & MINI-14



M14VABEK
VERTICAL ADJUSTABLE
BUTT EXTENSION KIT



BTSM-L | BTSM-A | BTSM-R
STEEL BUFFER TUBE SLING MOUNTS
LEFT, AMBIDEXTROUS & RIGHT HAND



Combat shotguns can trace their ancestry all the way back to the blunderbuss. Throughout history designs have changed and improved, but the concept and function remains the same.

Whether the role is that of an offensive weapon, breaching system or a less-lethal/crowd control tool, Sage has a full line of tactical accessories to improve multiple platforms.

Sage tactical shotgun accessories are adjustable, modular and are made for use in some of the harshest conditions.



TS870R
Steel Telescoping Stock
Remington 870



TSAR
Aluminum M4 Style Stock
Remington 870



TSAM
Aluminum M4 Style Stock
Mossberg 500

- 1) **TS880RLW – 870 Lightweight Stock**
- 2) **SGRSK – Shotgun Ghost Ring Sight Kit**
- 3) **VFG8P – 870 Vertical Fore-Grip**
- 4) **STBC – Tactical Barrel Clamp**
- 5) **MET – Magazine Extension Tube Kits**

SHOTGUN STOCKS & ACCESSORIES



FRS1187
1100/11-87 LIGHT MOUNT



STBC
Tactical Barrel Clamp



MET KITS
Magazine Extension Tube Kits



JSS870
Jumbo Steel Safety



PSMHG
Steel Hand Guard



MHGISL / MHGISR
Hand Guard & Sling Loop



SSR870 / SSM590
Offset Sling Loop



LBSO
Breaching Stand-Off Devices

WEAPON MOUNTING SOLUTIONS

Sage Weapon Mounting Solutions are built to work in the most challenging environments. We collaborate directly with end users to distinguish requirements and conclude whether we have an existing weapon mounting solution available.

Sage also collaborates with end users to develop requirements that will form the basis of new projects. We exchange 3D CAD models, renderings and units for testing.

Our engineering team follows a strict design, prototyping and test protocol to ensure that our weapon mounting solutions are delivered quickly and exceed the expectations of our customers.

Coupled with our precision CNC machining capabilities, prototyping, and assembly experience, Sage weapon mounting solutions deliver unparalleled value.

All of our weapon mounts are manufactured of the finest available components and materials, in the United States of America.



762NCSM
7.62 NATO CAPABLE
SOFT MOUNT



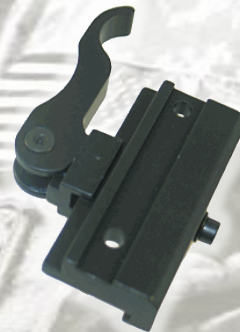
SMABARG | HMABARG
SOFT MOUNT
ADAPTER BAR



762RG
RAIL GRABBER
7.62 CAPABLE



QDM4PS
M4 QUICK-DETACH
INTEGRATED PLATFORM



SDPRRG
RAIL GRABBER
SMALL DEVICES



IPS/MM12
INTERBAR DIRECT MOUNT
OR RAIL GRABBER

STANDARD INSPECTION MIRRORS

All Sage Standard Inspection Mirrors (SIM) models feature tubular steel shafts and are available with multiple sizes of convex glass or acrylic flat mirrors. They durable black powder coat finishes and come in a variety of sizes. Sage Standard Inspection Mirrors are manufactured in the United State of America.



IMFL/12
12" Shaft
5" Mirror



IMFL/30 | IMFL/40
30" or 40" Shaft
5" Mirror



IMTAL/5 | IMTAL/8 | IMTAL/12
36" - 56" Shaft
5", 8" & 12" Mirror

All Sage Premier Inspection Mirrors (PIM) models feature lightweight aluminum shafts and are available with multiple sizes of convex glass or acrylic flat mirrors. They feature twist lock length adjustment and straight line non-rotational extension poles. Sage Premier Inspection Mirrors are manufactured in the United State of America.

PREMIER INSPECTION MIRRORS



PIM1700
47"-77" Shaft
12" Mirror



PIM1300
26"-43" Shaft
5" Mirror



PIM1400 | PIM1500
34"-52" | 47"-77" Shaft
8" Mirror



PIM1600
47"-77" Shaft
8" Mirror & Armrest



SAGE INTERNATIONAL, LTD.
3455 KINGS CORNER RD
OSCODA, MI 48750

P: +1-989-739-7000
F: +1-989-739-7098

WWW.SAGEINTERNATIONALLTD.COM